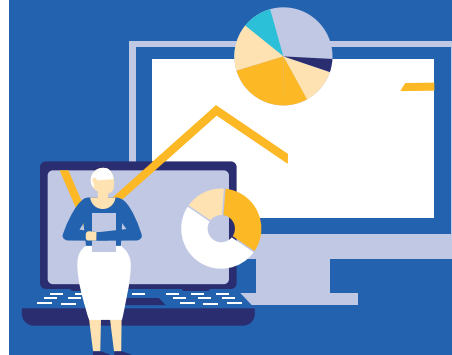


Personal online

ACCOUNT

What is the added value in this?

Your personal online Account can be accessed from the Shareholders' section of the airliquide.com website and has been designed to help you manage your Air Liquide share portfolio easily and securely.



SERVICES ACCESSIBLE IN JUST A CLICK

Access your personal Account from airliquide.com / Shareholders section.

• First-time users

- Enter the Shareholder ID listed on your account documents and follow the instructions.



GOOD TO KNOW

Guidelines for first-time users

A hotline is at your disposal. Dial the Shareholder Services number +33 157 05 02 26 from outside France or 0 800 166 179 from France (free from a French landline) and select the menu «Login help». You will then be assisted by a telephone adviser for your first connection.

• If you have already logged in

- Click on "Access your Account"
- Enter your usual email address and password



PLUS +

In 2021, your Personal Account gets a new look! We have taken your suggestions into account to offer you **more simplicity** and **functionality**.

A RELIABLE TOOL TO MANAGE YOUR SHARES QUICKLY ON A DAILY BASIS

You can access your account to:

SHAREHOLDERS	INTERMEDIARY REGISTERED SHARES	DIRECT REGISTERED SHARES
Place buy or sell orders 24/7		● (a)
Check your account documents (Account status, Tax Reporting Form, etc.)		●
Check your share portfolio and your eligibility for the loyalty bonus	● (b)	●
View all of the accounts I manage	●	●
Updating my personal details		●
View your dividend amount and your transaction history in real time		●
Validate online your request for exemption from the advance withholding on dividends		●
Access your personal information directly	● (b)	●
Ask to receive your Invitation to the Annual General Meeting by email	●	●
Vote on the Annual General Meeting resolutions	●	●

(a) Subject to having signed an account agreement with Air Liquide, to be downloaded from airliquide.com, shareholders section, or to request from the Shareholder Services.

(b) This information is sent by your financial institution.

(c) For direct registered shareholders.