

# Shareholder's

FACTSHEETS

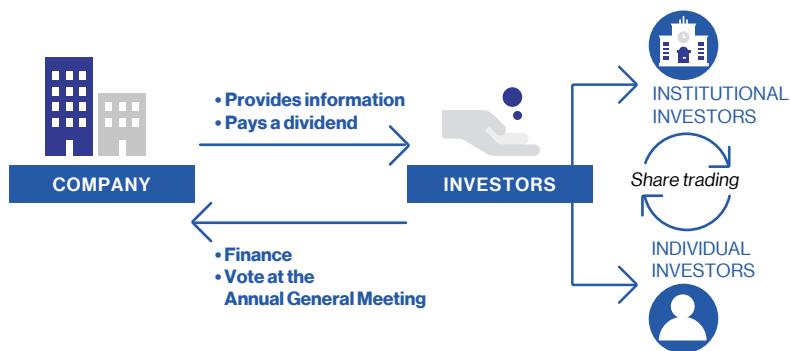
## 2021



# Understanding THE STOCK MARKET

## How does the stock market work?

The stock market is a regulated market that brings together companies with funding requirements and investors, including individual investors. Shares are bought or sold through a stock order.



When a company wishes to diversify its financing sources and raise additional funds, it can decide to be listed on the stock exchange; in other words to issue shares on the stock market for the first time, or carry out a capital increase if it is already listed.

The **primary** market is therefore the “new market” where shares are listed for the first time, at a price set by the issuer, according in particular to market conditions.

When investors have confidence in a company's ability to thrive and want to grow their savings, they buy shares which represent a fraction of this company's capital. By financing the company in this way, they become co-owners and accept the associated risks and potential gains. In exchange for this acquisition, the company has a duty of transparency and provides investing shareholders with information regarding its “financial health” and strategy, thus allowing them to make informed investment decisions. Investors also have a say in the company's major decisions by

voting at the Annual General Meeting, and receive dividends which are based on the company's profit: this is the investment's yield.

The shares of listed companies are liquid, i.e. once acquired, investors can freely exchange them on the **secondary** market (“secondhand market”). The offsetting of supply and demand for these shares contributes to the setting of their stock market price, i.e. their unit price. If buyers' demand exceeds sellers' offer, the share price increases. If sellers' offer exceeds buyers' demand, the share price drops.

**The stock market therefore plays a key role within the economy as companies rely on it for a part of the capital required for their investments and thus for their growth.**

## FOCUS ON THE CAC 40

The CAC 40 (Cotation Assistée en Continu or Continuous Assisted Quotation) is the benchmark index of the French market. It measures the share price performance of 40 companies on the Paris Stock Exchange. CAC 40 stocks are selected according to their market capitalization and their free float, i.e. the share of their capital open to the public and traded on the stock exchange. At December 31, 2020, Air Liquide was the sixth largest market capitalization of the CAC 40 index, with a market cap of 63,589 million euros and 100% free float.

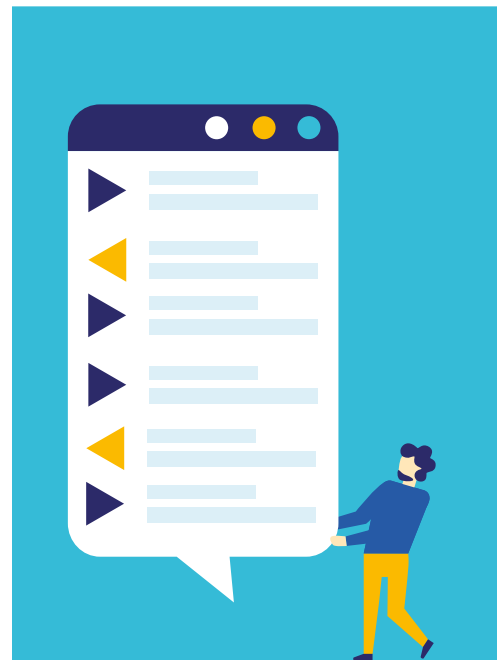


# STOCK Orders

## How can I buy shares?

- From your financial institution: your Air Liquide shares are placed in a securities account or a share savings plan and managed by your financial institution.
- From Air Liquide, **directly via your personal online Account<sup>(a)</sup>** or by contacting Shareholder Services: your Air Liquide shares are placed in a direct registered securities account and managed by Air Liquide Shareholder Services.

(a) Subject to having signed an account agreement. Only applicable to accounts with full ownership.



## CHOOSING THE RIGHT STOCK ORDER

To trade on the stock exchange, you can place an order with your regular financial intermediary or with Air Liquide.

**Different stock orders exist, the most frequently used are as follows:**

### 1 "Limit price" order

You set a maximum buy or minimum sell order (limit). The buy order is executed only when the market price is lower than or equal to this limit and the sell order when the market price is higher than or equal to this limit. The order may be partially executed if the quantity of negotiable shares on the market is not available at the set limit price.

### 2 "Best price" order

You did not specify an exact price. The order will be executed at the best price available when it reaches the market, for both buy and sell orders. The order may be partially executed if the quantity of negotiable shares on the market is not available at this best price.

### 3 "Market price" order

There is no price limit on this order. This order is given priority over all other types of orders. It is fully executed.



When you hold shares that are registered directly with Air Liquide, you can place your stock market orders via your personal online Account<sup>(a)</sup>, and thus benefit from a reduced brokerage rate of 0.10% before tax instead of 0.18% before tax for purchases paid in full by SEPA automatic debit<sup>(b)</sup> or by bank card<sup>(c)</sup>, as well as for sales.



Air Liquide share as at December 31, 2020

Continuous trading on Euronext Paris (COMPARTMENT A)

**Value Code:**  
ISIN FR0000120073

**Par value:**  
€5.50

**Number of shares:**  
473 660 724 shares

**Closing price:**  
€134.25

**Market capitalization:**  
€63,589 million

**Weighting in the CAC 40 index:** 5.01%

**Weighting in the EURO STOXX 50 index:**  
2.51%

(b) Only if the account is domiciled in the SEPA zone.  
(c) For purchases below €3,000.

# Shareholding

## OPTIONS

### Why not in registered form?

#### CHOOSE THE WAY YOU WANT TO HOLD YOUR SHARES

### 1 Bearer shares

If you open a securities account or a share savings plan with your financial institution, your shares are considered "bearer shares". Your point of contact is **your financial institution**.

### 2 Intermediary registered shares

You may request the conversion of your bearer shares into intermediary registered shares. Your shares are then recorded in your name in Air Liquide's register and your point of contact remains **your financial institution**.

### 3 Direct registered shares

You open a securities account with Air Liquide. Your shares are recorded in your name in Air Liquide's register. **Shareholder Services** is your point of contact.

DIFFERENCES IN SHAREHOLDING OPTIONS <i>To convert to registered shares, see Factsheet 4</i>	BEARER SHARES	INTERMEDIARY REGISTERED SHARES	DIRECT REGISTERED SHARES
My handling fees and management fees	Varies by financial institution	Varies by financial institution	Free
I place my stock orders with	My financial institution	My financial institution	Air Liquide
My broker fees	Varies by financial institution	Varies by financial institution	0.10% <sup>(a)</sup> or 0.18% before tax
I am eligible for free shares when free shares are attributed	●	●	●
I qualify for the loyalty bonus(b)		●	●
I am kept up-to-date on the Group's news, results and developments concerning shares by Air Liquide		●	●
I am invited to the Annual General Meeting directly by Air Liquide		●	●
My Tax Reporting Form is sent by	My financial institution	My financial institution	Air Liquide
My point of contact is	My financial institution	My financial institution	Air Liquide

(a) See conditions on page 3.

(b) For shares held for two full calendar years and subject to the conditions defined by Air Liquide's articles of association.

## ISIN CODES

Your Air Liquide shares are divided into four “value codes” (ISIN codes<sup>(a)</sup>) which you can use to check your eligibility for a bonus.

If you hold direct registered shares, these codes can be found on your account documents accessible in your personal online Account.

## PERMANENT VALUE CODES

### **FR0000053951**

Registered shares that already qualify for the loyalty bonus (acquired until 2018).

### **FR0000120073**

Shares acquired during the current year (2021) and which will entitle you to a loyalty bonus (in 2024) if held as registered shares for more than two full calendar years.

## INTERMEDIATE VALUE CODES

### **FR00140008A4**

Registered shares in 2020 that will qualify for the loyalty bonus in 2023.

### **FR0013459302**

Registered shares in 2019 that will qualify for the loyalty bonus in 2022.

## LOYALTY BONUS CALENDAR

2021	2022 / 2023	2024	2025 / 2026...
I ask my financial institution to convert my shares to registered form before December 31.	I hold on to my registered shares for two full calendar years.	I receive a loyalty bonus for my registered shares for the first time.	I receive the loyalty bonus every year if I keep my shares in registered form.



## PLUS + LOYALTY REWARDED

When you **register your shares**, your loyalty is rewarded! After holding registered shares for two full calendar years, you are eligible to receive **+10%** on the **amount of dividends received** and on **free shares** when free shares are attributed.

## DEADLINES

For direct registered shareholders, buy orders must be executed by **2 p.m. (Paris time) on December 31, 2021** to be recorded in 2021 and benefit from the loyalty bonus as of 2024.

(a) ISIN (International Securities Identification Number) is a standard dating back to 2001 that identifies securities worldwide.

# Registering SHARES

## How do I do it?

You wish to benefit from the loyalty bonus?  
It's easy! Convert your shares to registered form.

### CONVERTING YOUR AIR LIQUIDE SHARES TO INTERMEDIARY REGISTERED SHARES

#### You hold bearer shares

It is up to you to ask your financial institution to convert your Air Liquide shares to intermediary registered shares.

1. Complete the form to convert your shares to intermediary registered shares. This document can be downloaded from the [airliquide.com](http://airliquide.com) website or obtained from Shareholder Services.
2. Send your form to your financial institution<sup>(a)</sup>, which will forward your request to Air Liquide. Your intermediary registered shares will continue to be managed by your financial institution and remain in your securities account or share savings plan.

### TRANSFER YOUR AIR LIQUIDE SHARES TO DIRECT REGISTERED SHARES

#### You hold bearer shares or intermediary registered shares

It is up to you to ask your financial institution to transfer your Air Liquide shares to direct registered shares.

1. Complete the form to transfer your shares to direct registered shares. This document can be downloaded from the [airliquide.com](http://airliquide.com) website or obtained from Shareholder Services.
2. Send your form to your financial institution<sup>(a)</sup>. It will perform the procedure and inform Air Liquide Shareholder Services, which will send you the account agreement. You must return this to Shareholder Services, accompanied by the documents requested, to finalize the process of opening your account.

### BONUS AND SHARE SAVINGS PLAN

With **intermediary registered shares**, you can continue to take advantage of the tax breaks offered by a share savings plan and receive **the loyalty bonus<sup>(b)</sup>**. Download the form to convert your shares at [airliquide.com](http://airliquide.com), Shareholders>Forms.



### PLUS + LOYALTY REWARDED

When you **register your shares**, your loyalty is rewarded! After holding registered shares for two full calendar years, you are eligible to receive **+10%** on the **amount of dividends received** and on free shares when **free shares** are attributed.



### GOOD TO KNOW

Benefit from the loyalty bonus **as of 2024** by converting your shares **before the end of 2021**. Check with your financial institution what bank fees may apply. If bank fees are applied, to reduce them, request that your financial institution converts all your shares **at once**.

(a) Conversion fees and processing times may vary by financial institution. Contact your usual financial advisor for more information.  
(b) For shares held for two full calendar years and subject to the conditions defined by Air Liquide's articles of association.



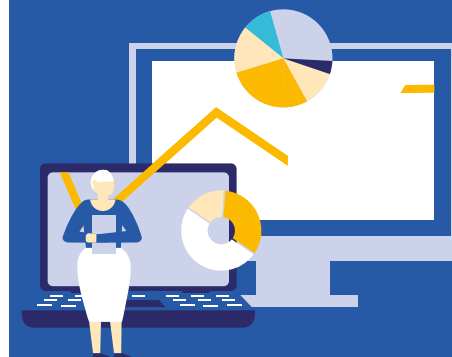


# Personal online

## ACCOUNT

### What is the added value in this?

Your personal online Account can be accessed from the Shareholders' section of the [airliquide.com](http://airliquide.com) website and has been designed to help you manage your Air Liquide share portfolio easily and securely.



### SERVICES ACCESSIBLE IN JUST A CLICK

Access your personal Account from [airliquide.com](http://airliquide.com) / Shareholders section.

#### • First-time users

- Enter the Shareholder ID listed on your account documents and follow the instructions.



#### GOOD TO KNOW

##### Guidelines for first-time users

A hotline is at your disposal. Dial the Shareholder Services number +33 157 05 02 26 from outside France or 0 800 166 179 from France (free from a French landline) and select the menu «Login help». You will then be assisted by a telephone adviser for your first connection.

#### • If you have already logged in

- Click on "Access your Account"
- Enter your usual email address and password



#### PLUS +

In 2021, your Personal Account gets a new look! We have taken your suggestions into account to offer you **more simplicity** and **functionality**.

### A RELIABLE TOOL TO MANAGE YOUR SHARES QUICKLY ON A DAILY BASIS

You can access your account to:

SHAREHOLDERS	INTERMEDIARY REGISTERED SHARES	DIRECT REGISTERED SHARES
Place buy or sell orders 24/7		● (a)
Check your account documents (Account status, Tax Reporting Form, etc.)		●
Check your share portfolio and your eligibility for the loyalty bonus	● (b)	●
View all of the accounts I manage	●	●
Updating my personal details		●
View your dividend amount and your transaction history in real time		●
Validate online your request for exemption from the advance withholding on dividends		●
Access your personal information directly	● (b)	●
Ask to receive your Invitation to the Annual General Meeting by email	●	●
Vote on the Annual General Meeting resolutions	●	●

(a) Subject to having signed an account agreement with Air Liquide, to be downloaded from [airliquide.com](http://airliquide.com), shareholders section, or to request from the Shareholder Services.

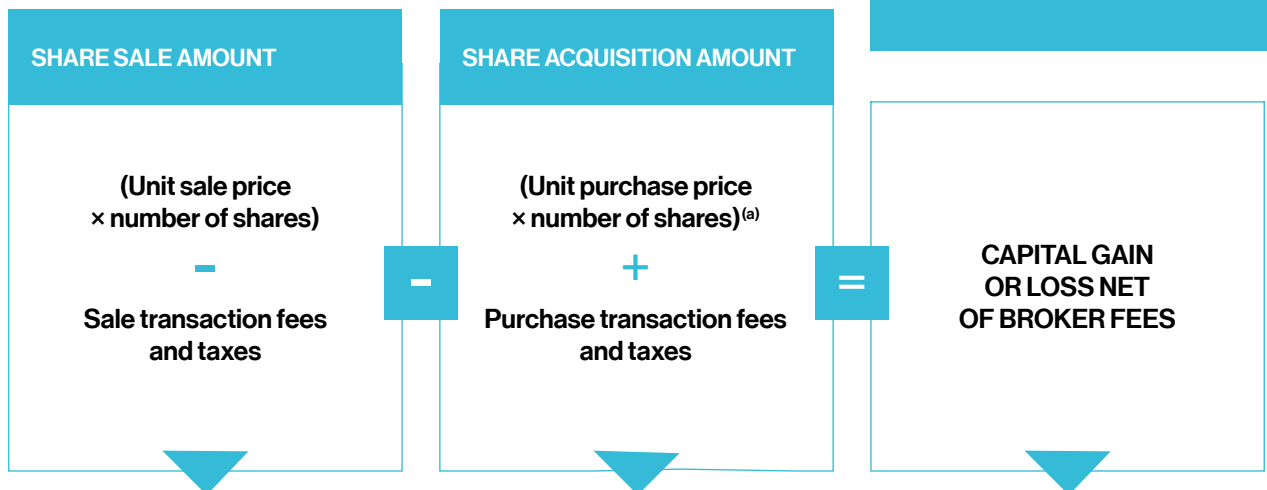
(b) This information is sent by your financial institution.

(c) For direct registered shareholders.

# Capital GAINS

## How to calculate them?

The gain on the sale of shares is called a capital gain. It is the difference between their sale amount and their purchase amount.



This information is included in your sale transaction statement.

This information is included:

- for purchases, on your purchase transaction statement;
- for gifts, on your 2735 gift form<sup>(b)</sup> or notarial deed;
- for an inheritance, on the 2705<sup>(b)</sup> and 2706<sup>(b)</sup> declarations.

The capital gains tax on sales is presented in Factsheet 10.



### GOOD TO KNOW (for French tax residents) TWO SCENARIOS THAT PROVIDE EXEMPTION FROM CAPITAL GAINS TAX IN FRANCE

Having a share savings plan, and keeping your shares for a period of five years from the account opening date. The capital gains realized after this period are only subject to social security contributions. Important: shares from another account cannot be transferred to a share savings plan. Only transfers from the share savings plan's cash account can be used to invest in shares.

The cash investment limit is €150,000 per plan.

Making a gift is still fully exempt from rights, taxes and social contributions up to maximum amounts set by French law. Unrealized capital gains on shares are then tax exempt, as long as the transaction is reported to the tax authorities (see Factsheet 11).

Plan to make your end-of-year gifts from September 2021.

(a) Unit purchase price adjusted, where required, for the attribution of free shares during the share holding period.  
(b) Forms are available from the tax authorities or on the [impots.gouv.fr](https://impots.gouv.fr) website.



# Free SHARES

## What are the benefits?

Air Liquide **regularly issues free shares to all of its shareholders.**

### GROW YOUR NUMBER OF DIVIDEND-PAYING SHARES

For all shareholders, free share attributions enable you to expand your portfolio over time. In addition to passing on approximately 50% of profits to shareholders by paying dividends, **Air Liquide distributes a portion of its retained earnings<sup>(a)</sup> to shareholders in the form of free shares.** These are free shares attributed in proportion to the number of shares you already hold.

### BENEFIT FROM AN ADDITIONAL 10% OF FREE SHARES

If you hold your registered shares for more than two full calendar years, **the loyalty bonus gives you a 10% increase** in the number of free shares you will receive<sup>(b)</sup>. For example, in the attribution in 2019, one free share was given for every 10 shares held, each shareholder eligible for the loyalty bonus who owns 100 shares receives 10 + 1 new shares.

### CALCULATING FRACTIONAL RIGHTS

If the number of shares you hold is not a multiple of the attribution transaction, you will receive a cash payment for the portion of the free share that cannot be distributed. This is known as a "fractional right" and is paid directly to your bank account.

#### An example based on the 2019 transaction multiple:

I have 307 shares in my portfolio. I therefore receive 30 free shares (one free share for 10 shares owned) and 0.7 "ordinary" fractional rights. Of these 307 shares, 205 are eligible for the loyalty bonus. I therefore receive an additional two free shares (one free share for 100 shares owned) and 0.05 "loyalty" fractional rights from the loyalty bonus. Both kinds of fractional rights are not fungible.



### FOCUS ON YOU KEEP THE SAME BENEFITS

Free shares have the **same characteristics** as the shares they are derived from:

- loyalty bonus
- seniority
- voting rights
- dividend rights



### GOOD TO KNOW

The fractional rights of shares held as intermediary registered shares and those of bearer shares are not fungible. If you have purchased bearer shares before the attribution of free shares, consider asking your account manager to convert them to intermediary registered form.

(a) Past undistributed net profits.

(b) In accordance with Air Liquide's articles of association.

# ANNUAL General Meeting

## How do I participate?

Air Liquide strives every year to make sure its Annual General Meeting is a special event, a unique venue for interaction and information about the Group. Air Liquide places great importance on shareholder participation and voting regardless of the number of shares held.

### DIFFERENT TYPES OF ANNUAL GENERAL MEETINGS

**An Ordinary Annual General Meeting** is held once a year within six months of the end of the fiscal year. Its purpose is to inform shareholders of the Group's activity and results, approve the financial statements, approve the dividend amount, appoint or reappoint members of the Board of Directors and the Statutory Auditors and, lastly, authorize certain operations of the Company. Resolutions presented at an Ordinary Annual General Meeting are adopted by a simple majority of shareholders present or represented.

**An Extraordinary Annual General Meeting** is convened when the Company wishes to submit for shareholder approval a change in the articles of association or a transaction affecting the capital (increase, decrease, merger, etc.). The resolutions can only be adopted by a majority of two-thirds of the capital present or represented. The Group generally convenes a **Combined Annual General Meeting** (an Ordinary and an Extraordinary Annual General Meeting convened on the same date by a single notice). Whether the quorum and majority conditions of the Ordinary Annual General Meeting or Extraordinary Annual General Meeting apply depends on the resolution.

### VOTING CONDITIONS

**Voting enables you to play a part in decisions that are important to the Group. There are three ways to cast your vote.**

**1 Online** (before the Annual General Meeting)

The vote by Internet is a simple and secure solution for registered and bearer shareholders in France and overseas alike.

You can:

- **access** online all the documentation relating to your vote (Invitation to the Annual General Meeting, Reference Document, etc.);
- **vote** on the resolutions;
- **appoint** the Chairman or a third party as your proxy;
- **apply** for an admission card to the Annual General Meeting.

Holders of registered shares: access online voting through your personal online Account at [airliquide.com](http://airliquide.com).

Holders of bearer shares: log on to your financial institution's website.

**2 By mail** (before the Annual General Meeting)

By completing and sending in your voting form received along with the invitation to the Annual General Meeting.

**3 Vote in person** (during the Annual General Meeting)

Using the tablet provided on arrival.



### What if you cannot attend the Annual General Meeting?

Make sure you are represented by choosing the proxy of your choice:

- by April 30, 2021 midnight using the paper form;
- or before 3 p.m. on May 3, 2021 via the online voting site.

**Plan ahead: no proxies or power of attorneys can be accepted on the day of the meeting.**



You have the option to vote online, before the Annual General Meeting, and to attend the Annual General Meeting in person if the health situation allows it. To do this, request a voucher for admission directly on the online voting site.

All shareholders in attendance at the Annual General Meeting receive an attendance fee. The event is broadcast live on [airliquide.com](http://airliquide.com), in both French and English, then made available as a webcast.

# Dividend

## When and how do I receive it?

The dividend is the portion of the Group's net profit that is distributed to shareholders. At Air Liquide, this portion represents about 50%; a sign of the Group's commitment to sharing the fruits of its growth with you.

### YOU DON'T HAVE TO DO ANYTHING

**For intermediary registered and bearer shares,** Air Liquide pays the gross dividend to your financial institution, which will then credit your account with the net dividend net of withholding taxes.

**For direct registered shares,** the dividend, net of withholding taxes, is paid by Air Liquide directly into your bank account.

### DIVIDEND PAYMENT

The dividend will be paid out on May 19, 2021.

Your bank account will be credited in the following days, depending on the processing time needed by your financial institution.

**Direct registered shareholders:** if you have changed your bank details, remember to update them as soon as possible from your personal online Account under "My profile" section. You can also send it to us by mail, accompanied by your ID or via the contact form on the [airliquide.com/en](https://airliquide.com/en) website, Shareholders section.

### 2021 DIVIDEND CALENDAR

**14** may

Last day of execution of a buy order to receive the dividend for the financial year 2020 for the shares thus acquired.

**17** may

Ex-dividend date. The opening price on this day is reduced by the amount of the dividend.

**19** may

Dividend payment date.



### PLUS + AN ADDITIONAL 10% IN DIVIDEND

If you hold your registered shares for more than two full calendar years, the loyalty bonus gives you the right to a +10% increase in the **amount of dividends** received<sup>(a)</sup>.

### FOCUS ON DIVIDEND PAID IN 2021

€2.75 per share<sup>(b)</sup> representing more than 50% of net profit (Group share).



### GOOD TO KNOW (for French tax residents) TAXATION OF DIVIDEND IN FRANCE FOR THOSE RESIDING OUTSIDE FRANCE FOR TAX PURPOSES

A statutory rate equal to at least 12.8% is withheld upon dividend payment by your account manager (Shareholder Services for direct registered Air Liquide shares, your financial institution for intermediary registered or bearer Air Liquide shares). However, in most cases, a tax agreement<sup>(c)</sup> is signed between France and your country of residence. The main aim of this agreement is to set a flat tax rate which is withheld from your dividends. If the tax value of the tax agreement is below

12.8%, to benefit from this rate, you must send Form 5,000<sup>(d)</sup> (corresponding to the request to apply the rate adopted in the agreement), completed and signed by the tax authorities of your place of residence, to your account manager by mid-April. This Cerfa form can be downloaded from [impots.gouv.fr](https://impots.gouv.fr).

It must be resent to your account manager each year, otherwise the statutory rate will be applied upon payment of the dividend.

(a) In accordance with Air Liquide's articles of association. – (b) Amount proposed for the 2020 fiscal year at the Annual General Meeting on May 14, 2021.  
(c) Tax agreement: a treaty between two countries aimed at avoiding the double-taxation of non-residents – (d) The Cerfa 5,000 is also known as Cerfa n°12816\*01-02

# Tax

## RETURN

### How to declare your 2021 income tax on your 2020 income?

The elements of taxation in this factsheet apply to French residents for tax purposes.

When you fill out your tax return in 2021, you will have the choice between the 30% flat tax and the current mechanism for the taxation of your investment income, including dividends received in 2020 and capital gains made in 2020.



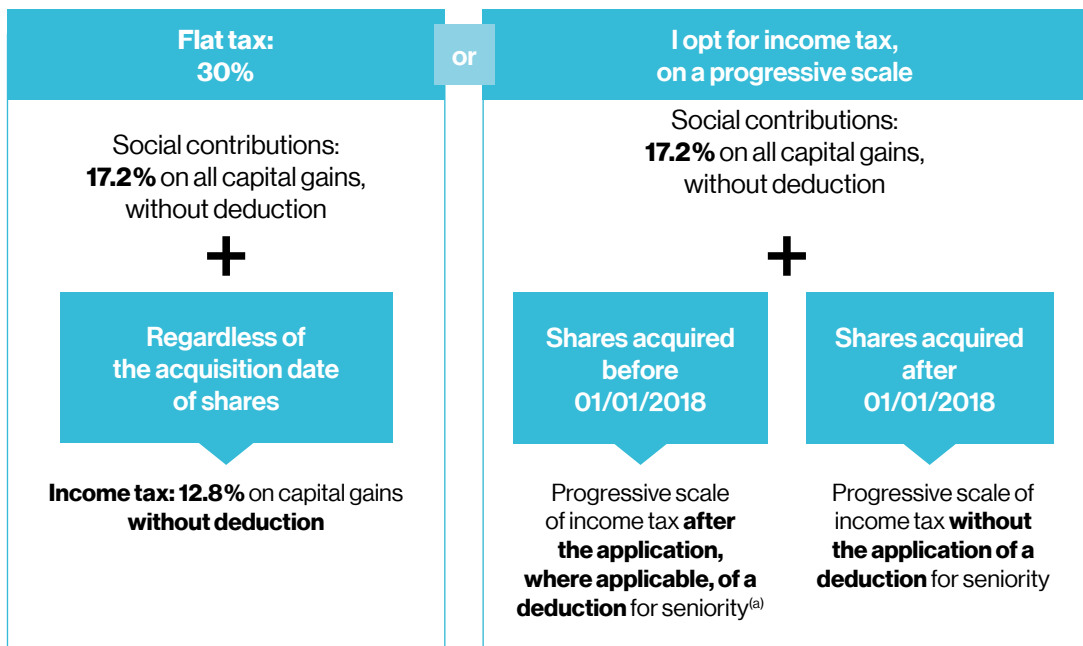
PAYMENT OF TAX

Tax on capital gains and losses on sales of investment securities must be paid to the tax authorities in September 2021.

#### CHOICE OF TAXATION METHOD

You may choose a different taxation mechanism each year and this mechanism will apply to all of your investment income. Air Liquide therefore advises you to assess your overall taxation of dividends and capital gains from sales using both methods before making your decision.

#### CAPITAL GAINS TAX ON SALES



(a) The deduction stands at 50% for a share seniority of between two and less than eight years, 65% for share seniority of at least eight years.

## DIVIDEND TAXATION

(regardless of the acquisition date of shares)

Flat tax: 30%	or	I opt for income tax, on a progressive scale
30% on the gross amount of dividends (without taking into account the 40% deduction)		Social contributions: <b>17.2 %</b>  + Income tax based on a progressive scale on the amount of gross dividends after the 40% deduction



## HOW TO COMPLETE YOUR TAX RETURN

To help you choose between the tax methods available to you and make an informed choice, before you complete your tax return for 2020 income, we recommend using the **tax authorities' simulator on the impots.gouv.fr** website.

### You must select an option:

Option 1	or	Option 2
<b>I opt for the 30% flat tax</b>		<b>I opt for income tax, on a progressive scale</b>
<ol style="list-style-type: none"><li>I leave box <b>20P</b> unticked. <input type="checkbox"/> <b>20P</b></li><li>The amount of my dividend which is pre-completed by the tax authorities is shown in box <b>2BH</b> (Revenus déjà soumis aux prélèvements sociaux avec CSG déductible si option barème) and any advance withholding tax payment deducted when the dividend was paid is shown in box <b>2CK</b> (<i>Prélèvement forfaitaire non libératoire déjà versé</i>).</li><li>In the event of a capital gain on a sale, I must complete the amount of my capital gain in box <b>3VG</b> (Plus-value sans application d'abattement) without taking into account the deduction for seniority.</li></ol>		<ol style="list-style-type: none"><li>I tick box <b>20P</b>. <input checked="" type="checkbox"/> <b>20P</b></li><li>The amount of my dividend pre-filled by the tax authorities appears in box <b>2BH</b> and any interim tax deducted at the time of payment of the dividend in box <b>2CK</b>.</li><li>In the event of a capital gain on a sale, I must complete the amount of my capital gain in box <b>3VG</b> (<i>Plus-value sans application d'abattement</i>) without taking into account the deduction and I must enter any deductions for seniority in box <b>3SG</b> (<i>Abattement pour durée de détention de droit commun</i>) from the document 2042C.</li></ol>

Please contact your local tax authorities if you have any questions.

## PAYMENT OF TAX

### THE PAYMENT OF TAX ON DIVIDENDS RECEIVED IN 2020 IS CARRIED OUT IN TWO STAGES:

#### 1. In 2020, when dividends are paid

- If you **have** sent a request to your account manager for exemption from the advance withholding before November 30, 2019 only the social contributions of 17.2% will be withheld;
- If you do not **fulfill** the requirements to benefit from this exemption, social contributions of 17.2% will be withheld along with an advance withholding of 12.8%, i.e. a total advance withholding of 30%.

- #### 2. The balance will be applied in 2021 when you pay your 2020 income tax of your investment income, according to the taxation method chosen.

# Passing on shares

## AND RELATED TAXATION

### What solutions are available to pass on my shares?

Passing on your Air Liquide shares to your loved ones, in addition to the share performance, means sharing a strong shareholder culture with them and your commitment to the Group.

The element of taxation apply to french residents for tax purposes.

### FOUR WAYS OF PASSING ON YOUR SHARES

	SHARED GIFTS Anticipated total or partial allocation of your shares to your children alone <sup>(a)</sup>	SIMPLE GIFTS Anticipated allocation of your shares to the beneficiary of your choice	HAND-TO-HAND GIFTS Facilitated passing on of your shares to your loved ones	CUSTOMARY GIFTS A present given on a special occasion (wedding, birthday, Christmas, etc.)
Notarial deed and declaration carried out by a notary	●	●		
Lower inheritance taxes	●	●	●	
May be added to the grantor's estate		●	● (included in the allocation of the grantor's assets)	
Purchase price valued at the average share price on the day of the gift by the notary or at the closing price of the previous trading day	●	●		
Purchase price valued at the average share price on the day of the tax declaration or, if this is higher, at the average price on the day of the gift			●	
Loyalty bonus maintained	●	● (maintained if the gift is made to a spouse or relative entitled to inherit)	● (maintained if the gift is made to a spouse or relative entitled to inherit)	● (maintained if the gift is made to a spouse or relative entitled to inherit)
Written agreement from both parties required. In order to value the shares passed on, the grantee's local tax authority must be notified of the gift within one month, using French tax form 2735. A copy of this form must then be sent to Air Liquide's Shareholder Services if you are directly registered, or to your account keeper if you are intermediary registered or bearer.			●	
Must represent a relatively small share of the grantor's assets				●
Does not need to be declared to the fiscal authorities				●

(a) Transgenerational shared gifts: donation to grandchildren.

## TAX EXEMPTION FOR DONATIONS

every 15 years, you are able to make a tax exempt donation for up to:

€100,000	for each child and from each parent
€80,724	for a spouse or civil partner
€31,865	for each grandchild
€15,932	for each brother and sister
€7,967	for each nephew or niece
€5,310	for each great-grandchild

## INHERITANCE

You can decide how your share portfolio will be distributed among your heirs. Upon your death, a declaration signed by your notary stating your marital status, the names of all beneficiaries and the number of shares attributed to each beneficiary is sufficient to distribute a portfolio.

Your account manager (Air Liquide Shareholder Services for direct registered shareholders, or your financial institution for intermediary registered shareholders and bearer shareholders), will execute all instructions given by your notary or the person managing your estate. To enable your shares to be revalued, do not forget to send a copy of your inheritance declaration form to your account manager.

Note: Shareholder Services will contact your notary once it has received his/her details and the death certificate which must be sent to [successions@airliquide.com](mailto:successions@airliquide.com).

## SEEK ADVICE

Your notary can advise you on personalized solutions for passing on marketable shares as part of a gift or inheritance and will write the deeds.

Some examples:

- **Inter-vivos distribution donations** allow you to pass on your shares while continuing to receive the dividends, i.e. retain the usufruct. The usufruct can be full or partial. Donation rights are reduced as they are based on the bare ownership value of the donation.
- The ban on giving up your shares prevents the sale of the shares or their donation for a period set by the grantor.
- The right of return allows the grantor to take possession of the shares again if the grantee dies first.

In all cases, do not forget to leave instructions or documents for your beneficiaries who may not necessarily be aware of all of your assets.



### GOOD TO KNOW LOYALTY BONUS

In the case of passing on shares or gifts to a spouse or a relative entitled to inherit, any **loyalty bonus** attached to Air Liquide shares is **retained**.



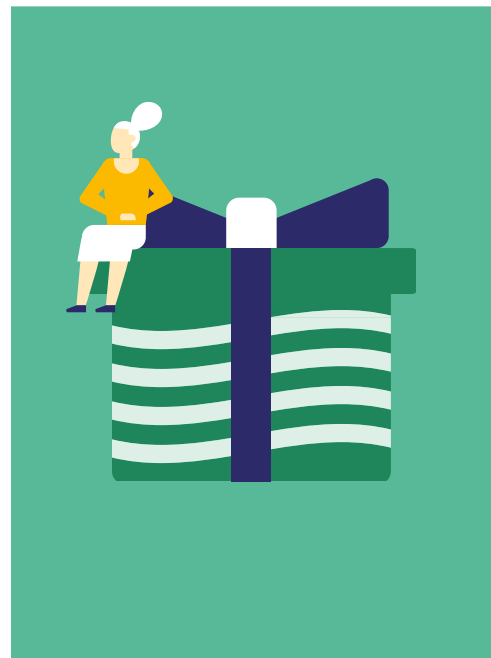
### PLUS + FOR NEW MINOR SHAREHOLDERS, A COMIC STRIP! (only in French)

It is not always easy to explain to a child the usefulness and functioning of the stock market. This is why a Booklet in the original format of an educational comic book is sent: 4 versions exist adapted to the age of the minor shareholder who receives the shares. At each moving into the upper age group, he will receive the corresponding comic book.



### FOCUS ON DIRECT REGISTERED SHAREHOLDERS

You can download "Hand-to-hand gifts" and "Customary gifts" forms on the [airliquide.com](http://airliquide.com) website, in Shareholders>Forms. For gifts completed before a notary, do not forget to send a copy of the notarized documents to Air Liquide's Shareholder Services.







## **CONTACT US**

**Via the Shareholders section**  
at [airliquide.com](http://airliquide.com)

**By mail**  
TSA 91948  
62978 ARRAS Cedex 9  
FRANCE

**By phone**  
+33 157 05 02 26 (from outside France)  
or free from a French landline:

**0 800 166 179** Free from a French landline